



394 Wilbraham Road
, Manchester, M21 0UH
Asking Price £285,000

2 1 1

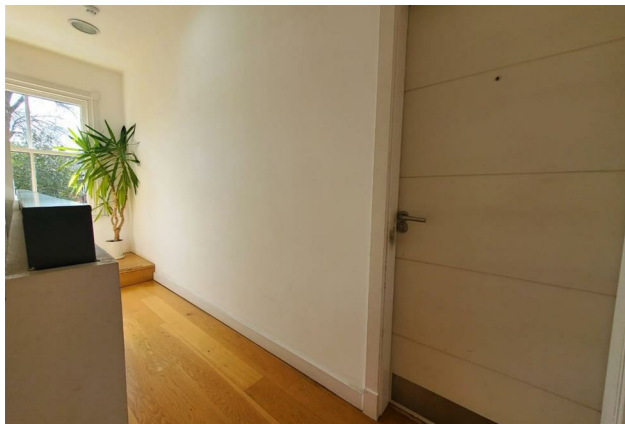
394 Wilbraham Road, Manchester, M21 0UH

Located in the heart of Chorlton, this charming, first-floor, two-bedroom apartment on Wilbraham Road offers a delightful blend of comfort and convenience. Offered with no chain, the property features a well-appointed reception room, perfect for relaxing and entertaining guests. The two bedrooms provide ample space for rest and relaxation, with both opening up to a private terrace which is perfect for entertaining, admiring wildlife, star gazing, and sunbathing in the spring & summer. The bathroom is designed with modern fixtures to meet daily needs, with the flat being 1 of 5 with a share in the Freehold of this plot.

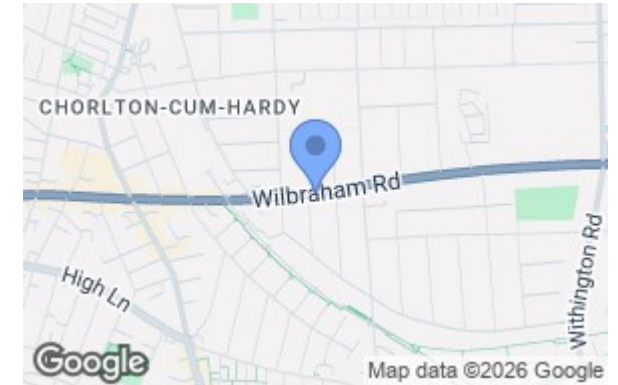
One of the standout features of this apartment is its prime location. Just a short stroll away, you will find a vibrant array of shops, bars, and public transport options, making it an ideal choice for those who appreciate easy access to local amenities. By way of example, the Chorlton tram stop is a 2 minute walk away, ensuring that you are never far from the lovely atmosphere that this area is known for.

Additionally, the property boasts well-presented communal gardens, offering a serene space to unwind amidst fruit and herb trees and bushes. For those with a vehicle, there is a dedicated parking spot for the flat on the drive, providing added convenience in this bustling neighbourhood.

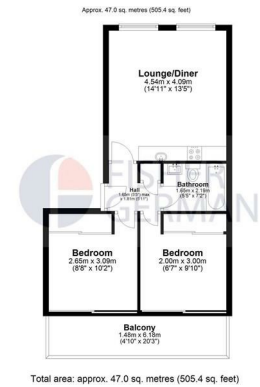
This apartment is not just a home; it is a lifestyle choice, perfectly situated to enjoy all that Chorlton has to offer. Whether you are a first-time buyer or looking to invest, this property presents an excellent opportunity in a sought-after area. Do not miss the chance to make this lovely apartment your own.



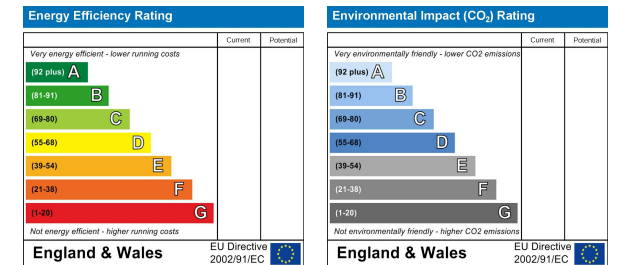
Area Map



Floor Plan



Energy Efficiency Graph



These particulars, whilst believed to be accurate are set out as a general outline only for guidance and do not constitute any part of an offer or contract. Intending purchasers should not rely on them as statements of representation of fact, but must satisfy themselves by inspection or otherwise as to their accuracy. No person in this firm's employment has the authority to make or give any representation or warranty in respect of the property.

58 Beech Road, Chorlton, Manchester, M21 9EG

Tel: 0161 510 9555 Email: homes@LAPropertyDiscovery.co.uk www.LAPropertyDiscovery.co.uk